

Cynomolgus CD3E&CD3G/CD3 epsilon&CD3 gamma Protein



Cat. No. CD3-CM202

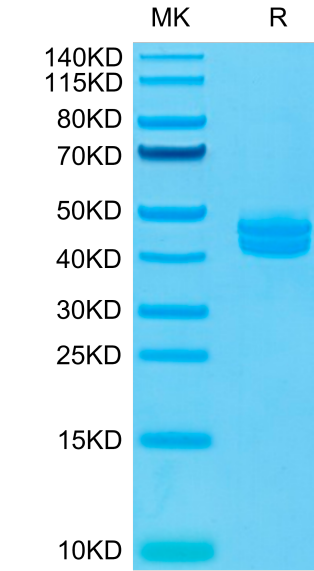
| Description | |
|------------------|--|
| Source | Recombinant Cynomolgus CD3E&CD3G/CD3 epsilon&CD3 gamma Protein is expressed from HEK293 with hFc tag at the C-Terminus of CD3E and CD3G. It contains Gln22-Asp117(CD3E) and Gln23-Thr113(CD3G). |
| Accession | Q95LI5.2(CD3E)&Q95LI7(CD3G) |
| Molecular Weight | The protein has a predicted MW of 36.9 kDa (CD3E) and 36.5 kDa (CD3G). Due to glycosylation,the protein migrates to 44-46 kDa&46-48 kDa based on Bis-Tris PAGE result. |
| Endotoxin | Less than 1 EU per µg by the LAL method. |
| Purity | > 95% as determined by Bis-Tris PAGE > 95% as determined by HPLC |

| Formulation and Storage | |
|-------------------------|---|
| Formulation | Lyophilized from 0.22µm filtered solution in PBS (pH 7.4). Normally 8% trehalose is added as protectant before lyophilization. |
| Reconstitution | Dissolve the lyophilized protein in distilled water. Please refer to the Certificate of Analysis for detailed instructions. |
| Storage | -20 to -80°C for 12 months as supplied from date of receipt.-80°C for 3 months after reconstitution.Recommend to aliquot the protein into smaller quantities for optimal storage. Please minimize freeze-thaw cycles. |

| Background | |
|---|--|
| T-cell surface glycoprotein CD3 epsilon & CD3 gamma chain, also known as CD3E & CD3G , are single-pass type I membrane proteins.When antigen presenting cells (APCs) activate T-cell receptor (TCR), TCR-mediated signals are transmitted across the cell membrane by the CD3 chains CD3D, CD3E, CD3G and CD3Z. All CD3 chains contain immunoreceptor tyrosine-based activation motifs (ITAMs) in their cytoplasmic domain. | |

Assay Data

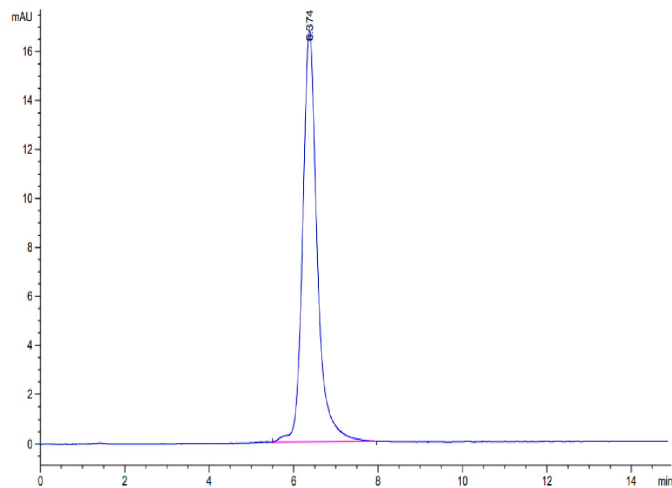
Bis-Tris PAGE



Cynomolgus CD3E&CD3G on Bis-Tris PAGE under reduced conditions. The purity is greater than 95%.

SEC-HPLC

Assay Data

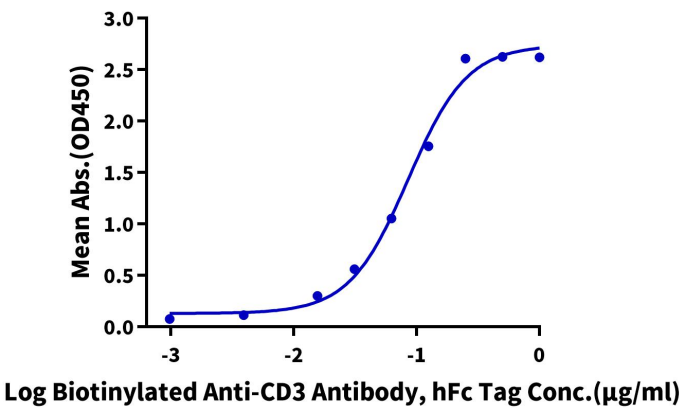


The purity of Cynomolgus CD3E&CD3G was greater than 95% as determined by SEC-HPLC.

ELISA Data

Cynomolgus CD3E&CD3G, hFc Tag ELISA

0.1µg Cynomolgus CD3E&CD3G, hFc Tag Per Well



Immobilized Cynomolgus CD3E&CD3G, hFc Tag at 1µg/ml (100µl/Well). Dose response curve for Biotinylated Anti-CD3 Antibody, hFc Tag with EC50 of 85.5ng/ml determined by ELISA (QC Test).